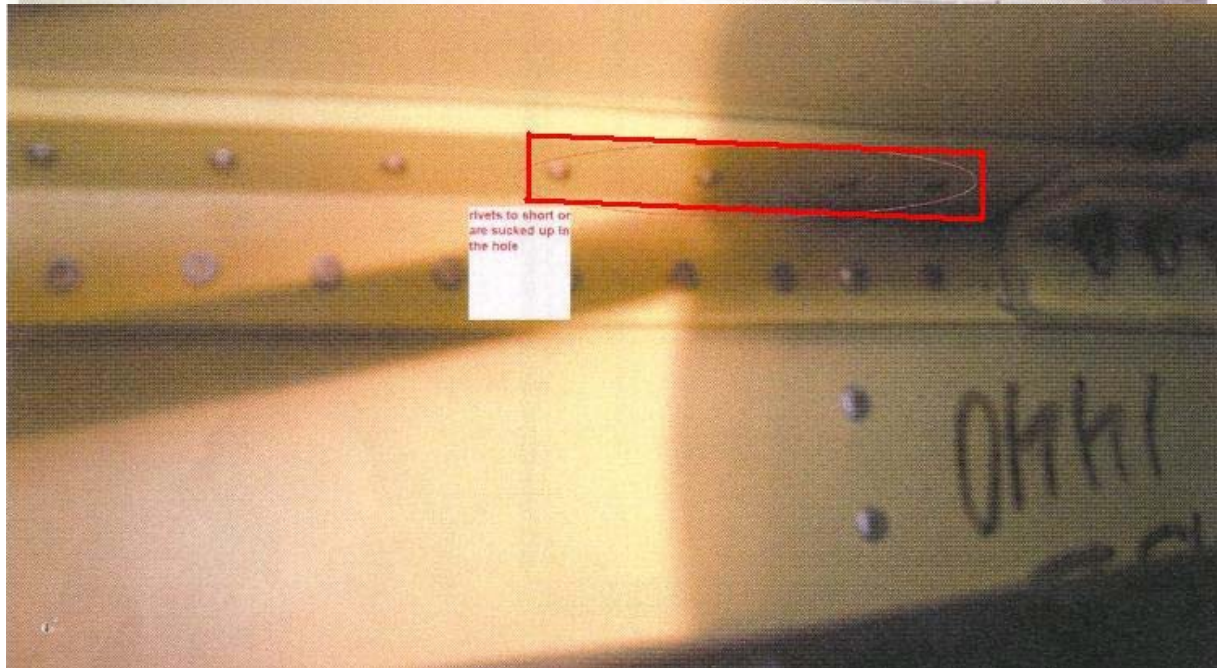


Beechcraft B200, Bad Rivet Installation in Stabilizer Spar, ATA 5510

A submitter working on this corporate aircraft writes, "After complying with Service Bulletin 55-3835 'Installation of Empennage Inspection Access Panels' and the 'Horizontal and Vertical Stabilizer' inspection, we found the horizontal stabilizer forward spar and ribs not riveted correctly from the factory. Many rivets that go through the forward spar are too short, and where the rib and forward spar come together, the rivet misses the rib. We have found this same problem on other aircraft we have inspected."



Beechcraft B200, Bad Rivet Installation in Stabilizer Spar, ATA 5510



Part Total Time: (unknown)

Beechcraft B200, Bad Rivet Installation in Stabilizer Spar, ATA 5510